



modular. modern. mono
by Arne Freytag

N° 19 ~ 2025



CUBO IS A CONSTRUCTED SANS SERIF BASED ON A SQUARE BASIC FORM. EACH GLYPH FOLLOWS THIS STRICT GRID, WHICH KEEPS THE FONT MONOSPACED AND GIVES IT A CONSISTENT STRUCTURE. THE OPTIONAL 'FILL' CUTS MAKE IT POSSIBLE TO FILL ALL CHARACTERS WITH DUMMY MATERIAL SO THAT NOT ONLY THE SHAPES HARMONISE, BUT ALSO THE GREY VALUE REMAINS BALANCED. THIS CREATES A COMPACT, VISUALLY BALANCED TYPOGRAPHY THAT IS PARTICULARLY STRONG IN MODULAR DESIGNS.

CUBO IS IDEAL FOR LOGOTYPES, BOLD HEADLINES AND DECORATIVE TYPESETTING. ITS MODULAR CHARACTER INVITES CREATIVE EXPERIMENTATION - BUILDING, COMBINING, MODELLING AND INVENTING ... ITS SIMPLE GEOMETRY AND CONSISTENT CONSTRUCTION LEND ANY DESIGN AN UNMISTAKABLE, MODERN AESTHETIC.

SCULPT FROM STONE



WITH OR WITHOUT FILL



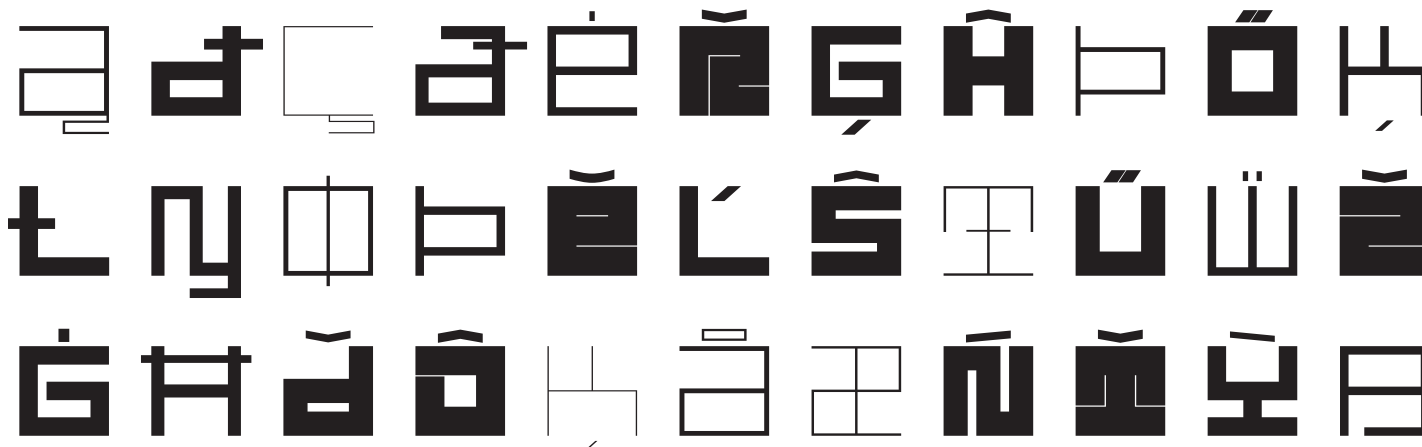


SHARE
INVESTMENTS

LANGUAGE SUPPORT

SUPPORTS 34 LANGUAGES (PRO/OT CFF)

Afrikaans, Basque, Breton, Catalan, Croatian, Czech, Danish, Dutch, English, Estonian, Finnish, French, Gaelic (Irish, Scots), German, Hungarian, Icelandic, Indonesian, Irish, Italian, Latvian, Lithuanian, Norwegian, Polish, Portuguese, Romanian, Saami (Southern), Serbian, Slovak, Slovenian, Spanish, Swahili, Swedish, Turkish.





BLOCKHAGE

CUBO ULTRA LIGHT

HARDROCK

CUBO EXTRA LIGHT

MOUNTAIN

CUBO REGULAR

CHISELED

CUBO MEDIUM

CONCRETE

CUBO BOLD

CRISPCUT

CUBO EXTRA BOLD

SAWBLADE

CUBO ULTRA BOLD

SCULPTOR

BLOCKHAGE

CUBO ULTRA LIGHT FILL

HARDROCK

CUBO EXTRA LIGHT FILL

MOUNTAIN

CUBO REGULAR FILL

CHISELED

CUBO MEDIUM FILL

CONCRETE

CUBO BOLD FILL

CRISPCUT

CUBO EXTRA BOLD FILL

SAWBLADE

CUBO ULTRA BOLD FILL

SCULPTOR

БЛОКН
САНАТ

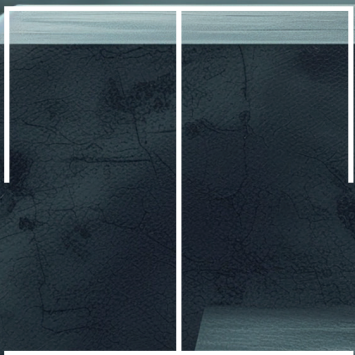
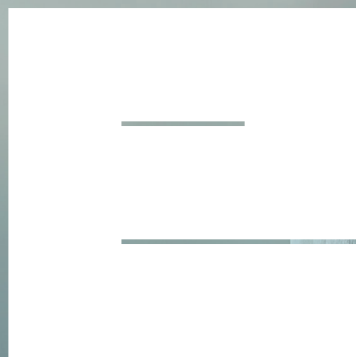
DESIGN CONCEPT



Regular



Regular + Fill



Character set -Fill

CAPITALS

À Á Â Ã Ä Å Æ Ç È É Ê Ë Ì Í Î Ï Ñ Ò Ó Ô Õ Ö × Ø Ù Ú Û Ü Ý Þ ß à á â ã

LOWERCASE

À Á Â Ã Ä Å Æ Ç È É Ê Ë Ì Í Î Ï Ñ Ò Ó Ô Õ Ö × Ø Ù Ú Û Ü Ý Þ ß à á â ã

PUNCTUATION

· | · · : , ... ! i # . ? € " ' ; | | _
[] { } [] — — — " " " ' , ,

LEGAL & REFERENCE

© ® ™ · ■

MATH & CURRENCY

· | + - · : = > < > < μ ¼ ½ ¾ " ' °
\$ ¢ £ ¥ €

LINING FIGURES

0 1 2 3 4 5 6 7 8 9

FRACTIONS

½ ¼ ¾

ARROWS & POINTERS



ADDITIONAL CAPITALS

À Á Â Ã Ä Å Æ Ç È É Ê Ë Ì Í Î Ï Ñ Ò Ó Ô Õ Ö × Ø Ù Ú Û Ü Ý Þ ß à á â ã
À Á Â Ã Ä Å Æ Ç È É Ê Ë Ì Í Î Ï Ñ Ò Ó Ô Õ Ö × Ø Ù Ú Û Ü Ý Þ ß à á â ã
À Á Â Ã Ä Å Æ Ç È É Ê Ë Ì Í Î Ï Ñ Ò Ó Ô Õ Ö × Ø Ù Ú Û Ü Ý Þ ß à á â ã
À Á Â Ã Ä Å Æ Ç È É Ê Ë Ì Í Î Ï Ñ Ò Ó Ô Õ Ö × Ø Ù Ú Û Ü Ý Þ ß à á â ã

ADDITIONAL LOWERCASE

À Á Â Ã Ä Å Æ Ç È É Ê Ë Ì Í Î Ï Ñ Ò Ó Ô Õ Ö × Ø Ù Ú Û Ü Ý Þ ß à á â ã
À Á Â Ã Ä Å Æ Ç È É Ê Ë Ì Í Î Ï Ñ Ò Ó Ô Õ Ö × Ø Ù Ú Û Ü Ý Þ ß à á â ã
À Á Â Ã Ä Å Æ Ç È É Ê Ë Ì Í Î Ï Ñ Ò Ó Ô Õ Ö × Ø Ù Ú Û Ü Ý Þ ß à á â ã
À Á Â Ã Ä Å Æ Ç È É Ê Ë Ì Í Î Ï Ñ Ò Ó Ô Õ Ö × Ø Ù Ú Û Ü Ý Þ ß à á â ã

IT IS NOT WRITTEN; IT IS BUILT STONE UPON STONE, MOSAIC UPON MOSAIC. CUBO, BORN FROM THE RIGOR OF THE SQUARE, WHERE EACH LETTER IS A FRAGMENT, AN ECHO OF THE WHOLE. NO CURVE SOFTENS ITS ESSENCE, NO RANDOMNESS DISTURBS ITS ORDER. EVERYTHING FOLLOWS THE IMPERISABLE PULSE OF THE GRID, WHICH BREATHES WITHOUT MOVING.

CUBO'S FORMS ARE RIGID, YET FULL OF POSSIBILITIES. IT GROWS HORIZONTALLY LIKE A THOUGHT UNFOLDING, AND VERTICALLY LIKE A WHISPER REACHING FOR THE SKY. EACH LETTER IS AN EDIFICE, A FRAMEWORK OF LINES THAT CARRIES MEANING WITHOUT ENCLOSING IT.

CUBO KNOWS NO DIRECTION, ONLY STRUCTURE. NO ABOVE, NO BELOW—JUST THE CONSTANT PLAY OF FORM AND VOID, OF PRESENCE AND PAUSE. WITHIN IT DWELLS A SILENT POETRY, NOT FOUND IN THE WORD ITSELF BUT IN THE SPACE BETWEEN. A LANGUAGE REDUCED TO ITS CORE, AND FOR THAT VERY REASON, INFINITE.

