

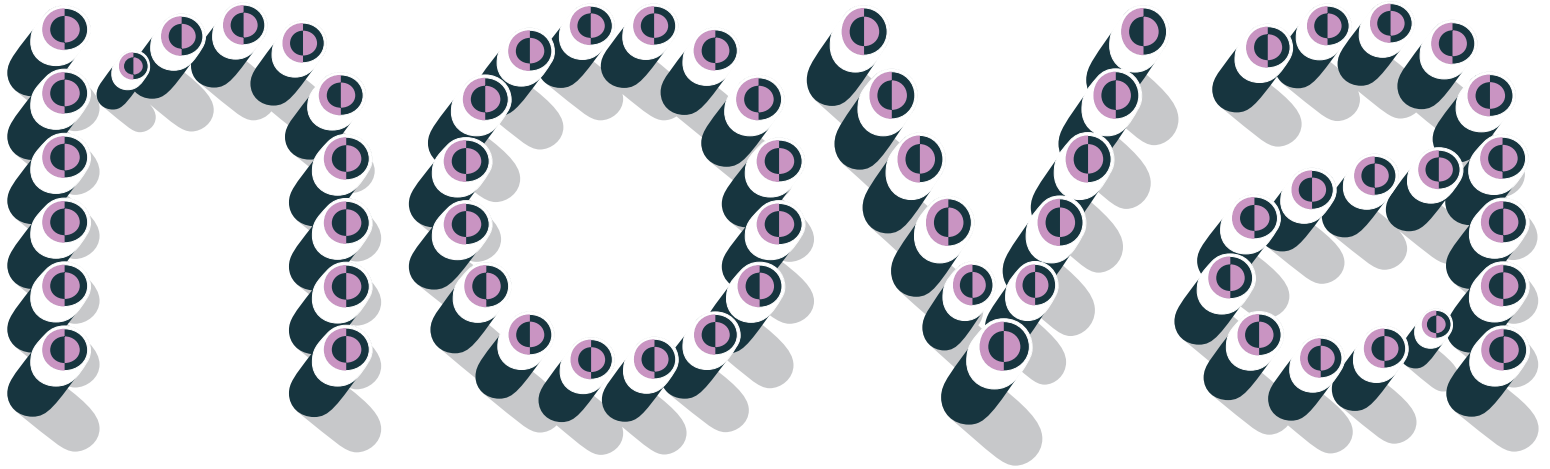
Punto Poly

Stackable dotted strokes
by Arne Freytag

N° 11 - 2018



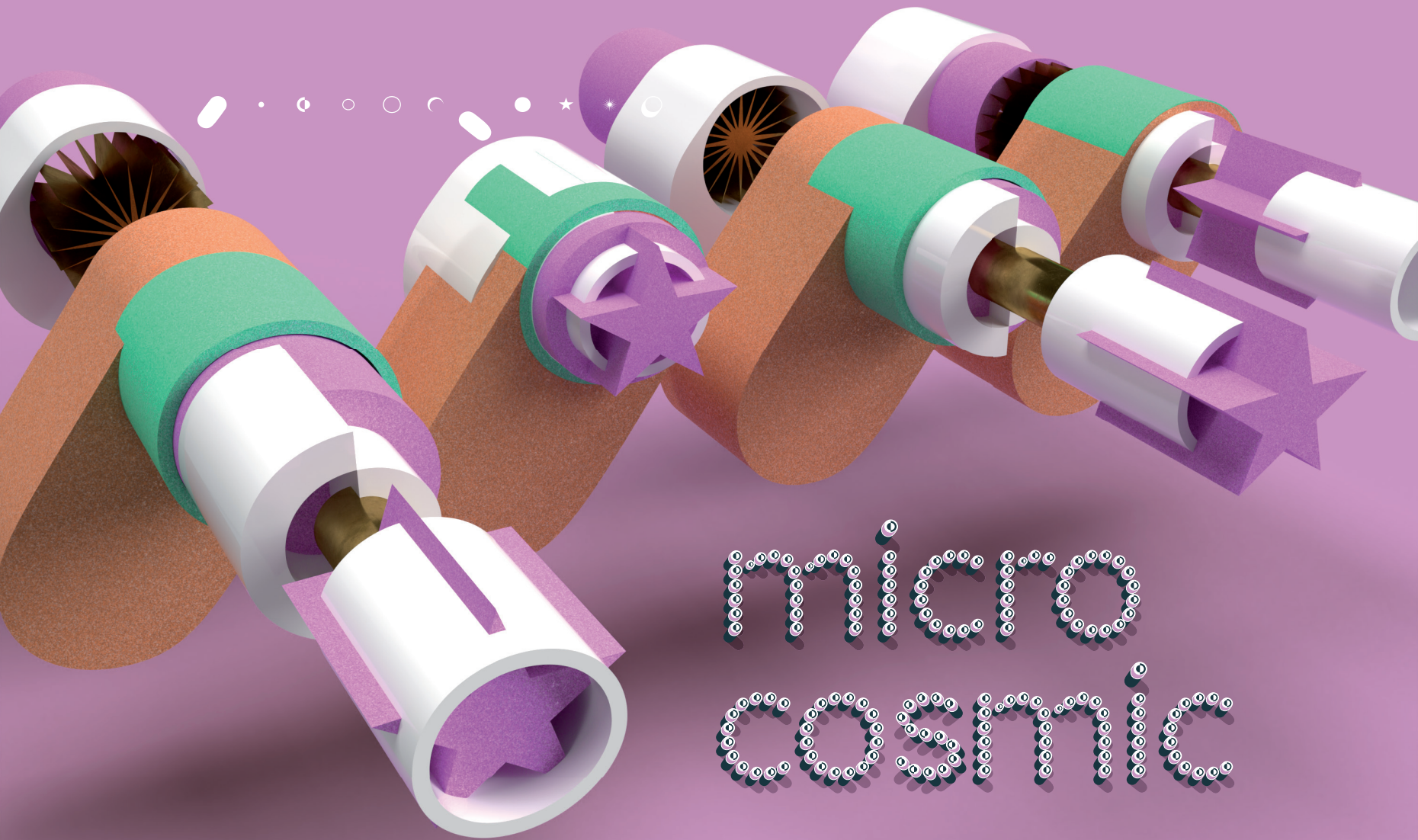
Punto Poly is the layered type system of Punto for chromatic typesetting. Endless effects can be created by 11 stackable layers and different colors. The dots of Punto Poly are not made up of grid-based dots, they are optical corrected and there is always the same distance between the dots, with the aim to create more harmonic letterforms. The dots also vary gradually in size to reflect the thickening and thinning of strokes, giving the letterforms a sophisticated overall look. This unique approach to type design allows for a high degree of customization and versatility in use. Punto Poly's meticulous dot placement ensures clarity and readability even at smaller sizes. With its combination of precision and creativity, Punto Poly opens up new possibilities for innovative typographic designs. The dots of Punto Poly can also take on different shapes, such as stars, tubes, or circles, adding even more diversity to its visual effects.



entre les trous de la mémoire

Appointement

komm endlich zum Punkt

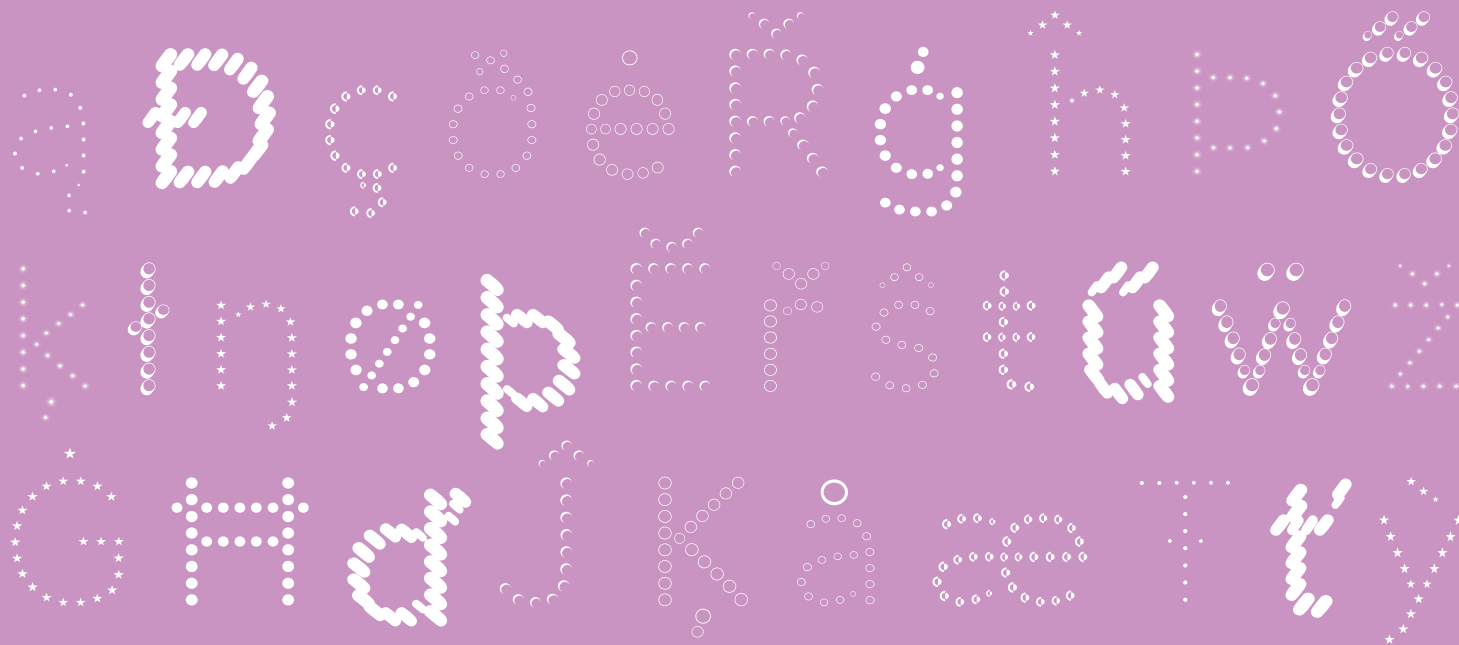


micro
cosmic

LANGUAGE SUPPORT

SUPPORTS 34 LANGUAGES (PRO/OT CFF)

Afrikaans, Basque, Breton, Catalan, Croatian, Czech, Danish, Dutch, English, Estonian, Finnish, French, Gaelic (Irish, Scots), German, Hungarian, Icelandic, Indonesian, Irish, Italian, Latvian, Lithuanian, Norwegian, Polish, Portuguese, Romanian, Saami (Southern), Serbian, Slovak, Slovenian, Spanish, Swahili, Swedish, Turkish.



Mountain View

PUNTO POLY 3D

Club Sandwich

PUNTO POLY OUTLINE

Hot Enterprise

PUNTO POLY CHROME

Determination

PUNTO POLY PUNCH

Characteristical

PUNTO POLY AIR

Superhighways

PUNTO POLY SOLID

Understanding

PUNTO POLY STAR

Transformation

PUNTO POLY INLINE

Communicater

PUNTO POLY SHADOW

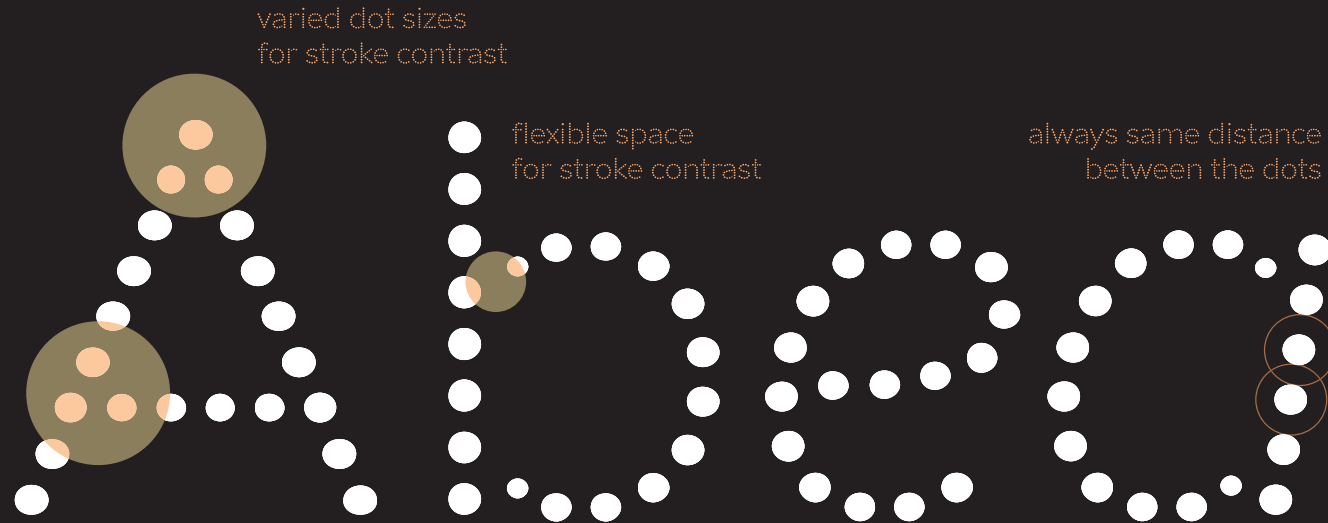
Considerations

PUNTO POLY SUN

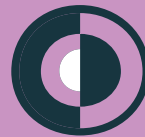
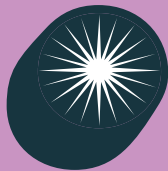
Championship

PUNTO POLY TUBE

DESIGN CONCEPT



The problem with the design of dot lettering lies in the even distribution of the distances between the dots. Regardless of the shape and length of a line, the spacing between the dots should be precise and even in order to end exactly on the dot. In the Punto Poly font, the spacing between the dots and the dot sizes are varied minimally to compensate for this negative effect. In addition, a flexible space is used for dipping curves, such as the letters a, d, b, q, p and g. Minimal stroke width contrast and the optical equalisation of thickening contribute to a harmonious overall appearance of the font.



Character set

CAPITALS

ABCDEFGHIJKLMNOPQRSTUVWXYZ

LOWERCASE

abcdefghijklmnopqrstuvwxyz

PUNCTUATION

*\•:;...!|.#.?¿“”://_(){}[]—-«»<>„“”‘’

LEGAL & REFERENCE

© ® ™ * † ‡ § ¶

MATH & CURRENCY

·/^-+ - x ÷ = > < ≥ ≤ ± ≈ ~ ∞ [Ω Δ Π Σ √ μ ∂ ‰ ‰ ‰ ° ‰ \$ ¢ £
¥ € ¢

LINING FIGURES (PROPORTIONAL & TABULAR)

0123456789 0123456789

INFERIOR, DENOMINATOR, NUMERATOR, SUPERIOR

0123456789 0123456789 0123456789
0¹²³456789

FRACTIONS

½ ¼ ¾

ARROWS & POINTERS

↑ ↗ → ↘ ↓ ↙ ← ↖

ADDITIONAL CAPITALS

Æ Ð Ð Ħ İ Ł Ñ Ø € Þ ß TK

ACCENTED CAPITALS

Á Â Ã Ä Å Æ Ā Ą Ć ĉ Ċ Ď ě Ĕ ĕ Ė Ę Ğ ğ Ġ ġ Ĩ ĩ Ĵ ĵ Ķ ĸ Ĺ ĺ Ľ Ļ Ń ń Ņ ņ Ň ň Ő ő Œ œ Œ œ Ŕ ŕ Ŗ ŗ Ś ś Š š Ţ ţ
Ť ť Ú ú Ů ů Ű ű Ų ų Ŵ ŵ Ŷ ŷ Ÿ Ź ź

ADDITIONAL LOWERCASE

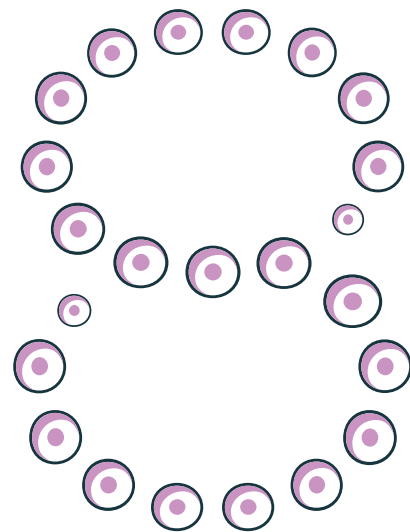
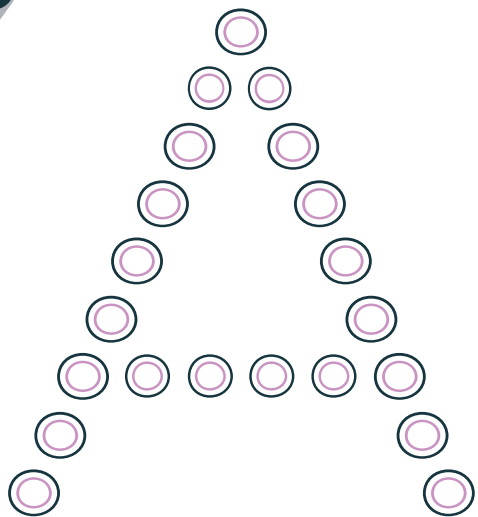
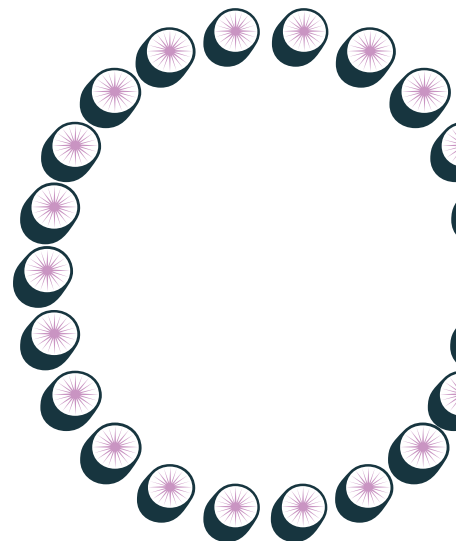
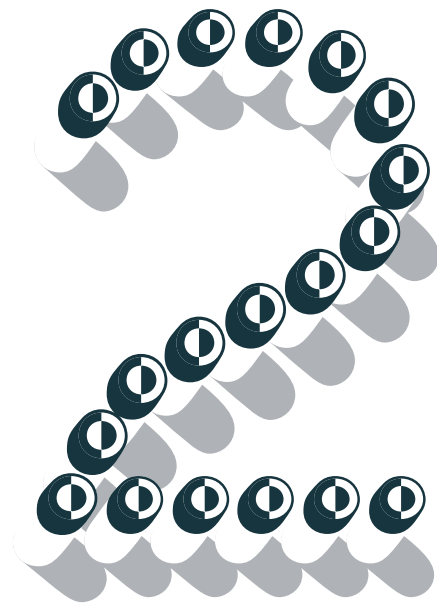
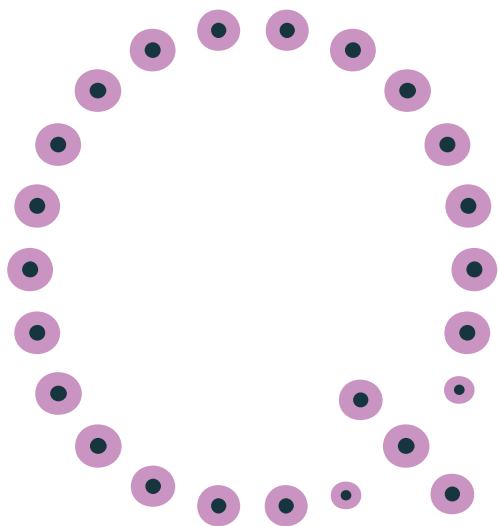
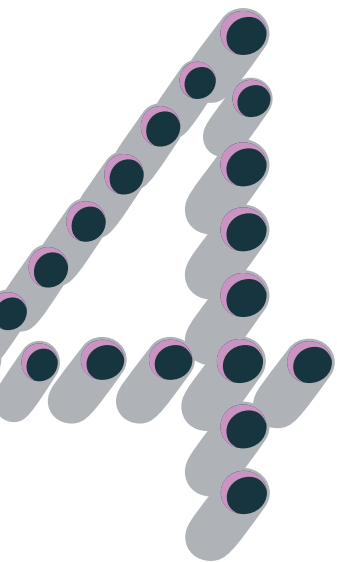
æ đ ð ħ k i ŋ ø æ þ ß tk

ACCENTED LOWERCASE

á â ã ä å æ ā ą ć ċ ĉ ċ ě ĕ ė ě Ę ğ ġ ħ î ĩ ĵ ģ ĵ Ķ ĸ Ĺ ĺ Ľ Ļ Ń ń Ņ ņ Ň ň Ő ő Œ œ Œ œ Ŕ ŕ Ŗ ŗ Ś ś Š š Ţ ţ Ť ť ú û ü ü Ű ű Ų ų Ŵ ŵ Ŷ ŷ Ÿ ź ź

STANDARD LIGATURES

fi fl ffi ffi ff





multimedial
Kunst

multimedial
Kunst



